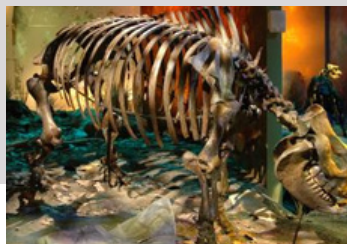


# LOCALS *guide*



OUR TOP PLACES TO VISIT IN  
WASHINGTON COUNTY

## GRAY FOSSIL SITE



*Paleontological site in our backyard preserves a one-of-a-kind window into the Appalachian Highlands five million years ago and makes our museum an invaluable resource for paleontology research and education.*

## DOWNTOWN JOHNSON CITY RESTAURANTS

*Label · Wild Wing Cafe ·  
Holy Taco · Freibergs ·  
Southern Craft BBQ*



## PINNACLE MOUNTAIN FIRE TOWER



*Rough gravel road and a  
.25 mile hike to the tower*

## PARADISE ACRES

*Pumpkin Patch · Mini-Golf ·  
Laser Tag · Hayrides.*



# LOCALS *guide*



OUR TOP PLACES TO VISIT IN  
SULLIVAN COUNTY

## BAYS MOUNTAIN



*3,550 acres nature park  
and planetarium*

## WARRIORS PATH STATE PARK

*Home to premier boating and  
fishing activity, hiking trails, an  
internationally-renowned  
mountain bike trail system, an  
award-winning nature education  
program and a nationally  
recognized golf course.*



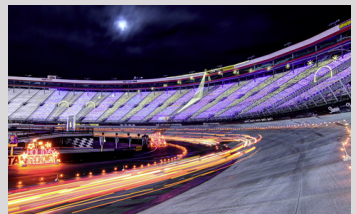
## KINGSPORT AQUATIC CENTER



*Waterpark and indoor  
Olympic-size swimming  
pool.*

## BRISTOL MOTOR SPEEDWAY

*Don't miss out on  
Speedway lights and ice  
skating at Christmas time!*



# LOCALS *guide*

OUR TOP PLACES TO VISIT IN  
CARTER COUNTY



## CARVERS GAP



*Carvers Gap is the gateway to the World Famous Roan Highlands and The Worlds Largest Natural Rhododendron Garden in the World.*

## WILBUR LAKE

*Small lake fed by Watauga Lake. Great fishing, kayaking, and picnics.*



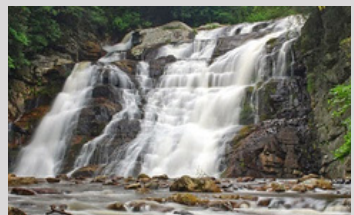
## TWEETSIE TRAIL



*The trail provides opportunities for walking, hiking, running, biking, etc. on a relatively flat grade in a beautiful, natural setting.*

## LAUREL FORK FALLS

*Moderate hike with 80ft waterfall!*



# LOCALS *guide*



OUR TOP NEARBY SIGHTS  
PLACES TO VISIT

## BARTER THEATRE IN ABINGDON, VA



*The nation's longest running professional theatre produces more than 25 musicals, plays & live band showcase performances year-round.*

## BLUE RIDGE PARKWAY

*America's favorite drive. Drive · Hike  
· Ride · Explore · Camp · Bike ·  
Experience Nature*



## BILTMORE ESTATE IN ASHEVILLE, NC



*The 8,000 Acre Estate Offers Something for Everyone. Lush Gardens, Blue Ridge Mountain Views, Dining, Shopping, & More.*

## GRAYSON HIGHLANDS STATE PARK

*Virginia's two highest mountains, Grayson Highlands offers scenic views of more than 5,000 feet high. includes campgrounds, and hiking trails leading to waterfalls and overlooks.*

