



**11680 252nd Street, Maple Ridge BC**

faithwilson | CHRISTIE'S  
INTERNATIONAL REAL ESTATE



# THE PROPERTY



## Your Secluded Private Oasis Awaits You

Welcome to your PRIVATE OASIS with over six-acres in a secluded and relaxing setting that is rarely seen and seldom available. You are encompassed by Kanaka Regional Park and Cliff Falls with no neighbours in sight, picturesque landscape featuring rolling lawns, a tranquil forest backdrop with mature trees, a lovely river, low maintenance gardens, and so much more.

The house comes with over 4,000sq ft of renewed deck and patio space overlooking the rest of the property. Perfect place to entertain your friends and family. Also abundant parking, an outdoor swimming pool, a riverside tennis court, koi pond, green house. Imagine waking up to fresh coffee next to the pond, having lunch around the pool and end your evening with drinking your favourite nightcap while gazing up at the stars sitting at one of 3 firepit areas or relaxing in the indoor or outdoor hot-tub.

Inspired by our local BC Heritage, the house features a West-Coast cabin design with plenty of exposed wood and natural light overlooking the expansive view of your yard. The house itself has been updated and refreshed throughout the years including New Roof, New Deck and installation of A/C making it turn-key or minimum adjustments to fit your personal needs.

BONUS: Nurture your future generation by enrolling them in one of the most top-rated schools in the province.





# LOCATION

## Points of Interest

- **1 hour drive** to Vancouver and YVR Airport
- **45 minute drive** to Abbotsford Airport
- **35 minute drive** to Metrotown
- **37 minute drive** to Surrey City Centre
- **35 minute drive** to Coquitlam City Centre
- **About a 10 minute drive** to Maple Ridge City Centre
- **About a 25 minute drive** to Downtown Mission

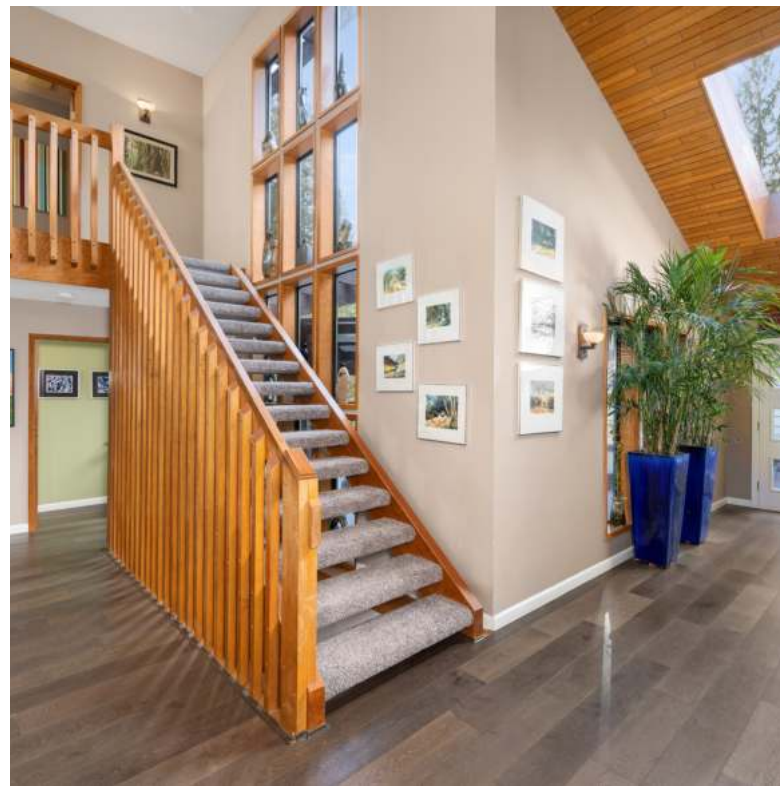
## Schools

- **7 minute drive** to Private School Meadowridge School
- **3 minute drive** to Garibaldi Secondary School
- **18 minute drive** to Maple Ridge Elementary

## Community

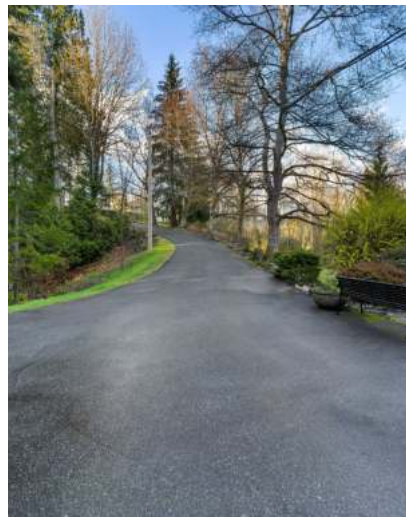
- **10 minute drive** to Kanaka Creek and Maple Ridge Park
- **12 minute drive** to Selkirk Town Centre
- **15 minute drive** to Golden Ears Provincial Park
- **31 minute drive** to Alouette Lake
- **Just over 10 minute drive** to grocery stores (both local and commercial) Such as Shipley's No Frills, Maple Market, Kam's Market and many more





**Interior Features / Amenities** • 5,714 Sqft on 3 levels • West-Coast Cabin Design inspired by local BC heritage • 4 Bedroom (Master on the Main Level) • 3.5 Bathroom • Separated 2 Car Garage • Over 4,000 sqft of Renewed Deck and Patio Area overlooking the rest of the property • An Indoor Hot-tub • A Soaker Tub • 1 Sauna • Gym (Could be another Bedroom) • Laundry Room • Workshop • Over-sized Games Room • Wet Bar • Recreation Room (Could easily be used as 2<sup>nd</sup> Livingroom)







**11680 252ND STREET**  
Maple Ridge BC V4R 1E9

4 bedroom  
3.5 bath  
3 stories  
5,600 SQ.FT. on 6.14  
acres of land

Main - 2,831 SQ.FT.  
Upper - 677 SQ.FT.  
Lower - 2,092 SQ.FT.

**Total - 5,600 SQ.FT.**

Unfinished - 114 SQ.FT.

**Total Area - 5,714 SQ.FT.**

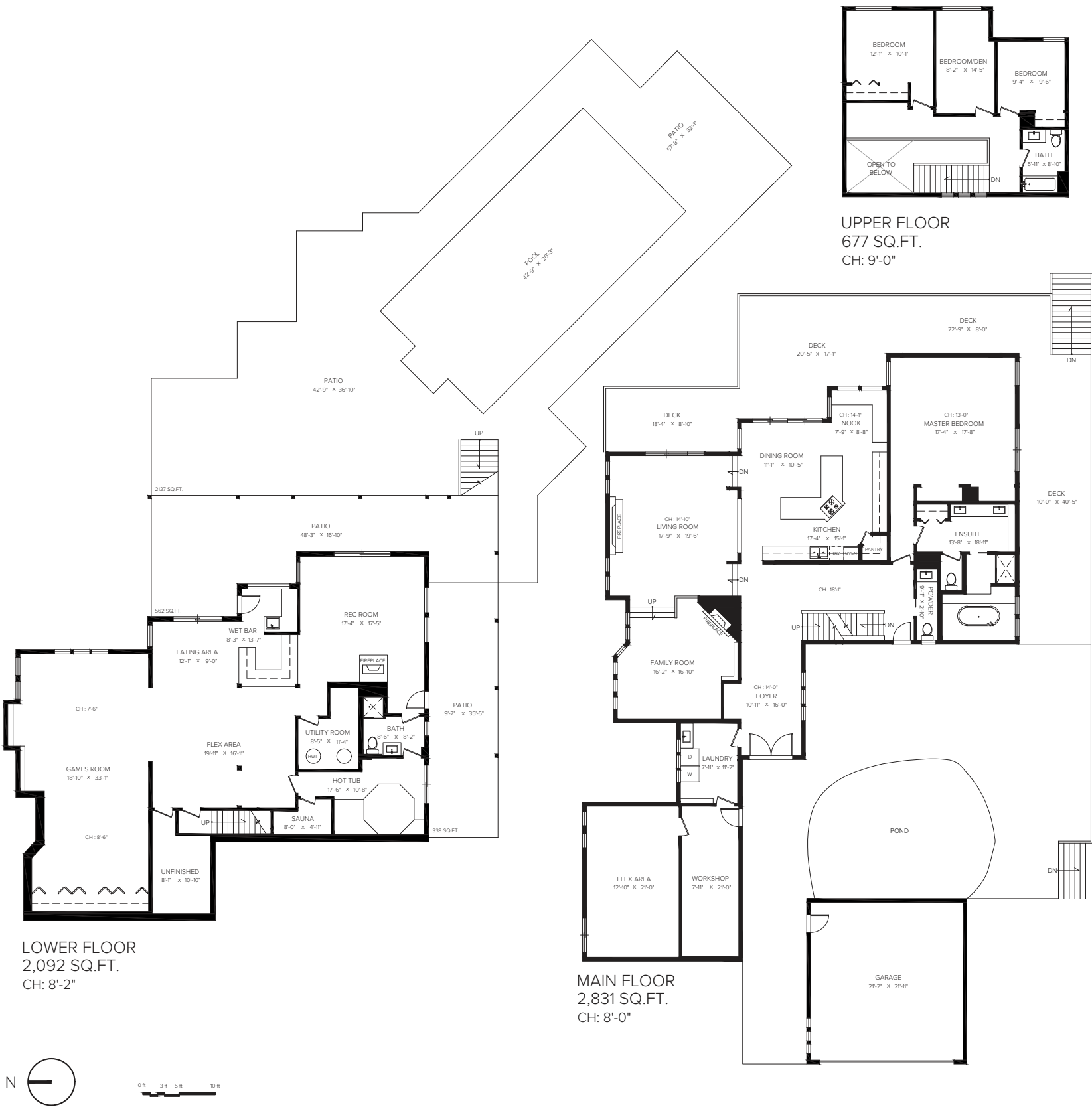
Garage - 512 SQ.FT.

Deck - 1163 SQ.FT.

Patio - 3,028 SQ.FT.

Pool - 826 SQ.FT.

**Total - 5,529 SQ.FT.**



LUXURY STRATA HOMES ADVISOR  
**JOE LEE** 李兆章  
PERSONAL REAL ESTATE CORPORATION

**Joe Lee**  
Personal Real Estate Corporation

C: 604.726.457

T: 604.224.5277

info@joeleere.com  
joeleere.com

Scan to watch a short video  
on the property



Scan to browse the virtual  
tour and floor plans







LUXURY STRATA HOMES ADVISOR

**JOE LEE** 李兆章

PERSONAL REAL ESTATE CORPORATION

[joeleere.com](http://joeleere.com)