



## COMMERCIAL

---

**LAND**

**MULTI-FAMILY**

**RETAIL**

**OFFICE**

**INDUSTRIAL**

**BUSINESS**



CLIENT FOCUSED & RESULTS DRIVEN



# WORLD-CLASS SERVICE EVERY STEP OF THE WAY



**GOLD PEACH**  
REALTY

## ABOUT OUR COMPANY

Gold Peach Realty's Commercial Division has become a pivotal member of the Georgia real estate landscape since its inception. We offer a full spectrum of commercial real estate services in Georgia, from insightful market analysis to strategic transactions, from purchase to sales to leasing. We handle commercial land, multi-family, retail, office, industrial, and business real estate, along with residential and luxury real estate - the ideal fit for your comprehensive real estate needs.

## ABOUT OUR HISTORY

Gold Peach Realty was founded by a visionary team with a rich history in the real estate market, bringing together over three decades of experience. Established on the principles of integrity, expertise, and forward-thinking, Gold Peach Realty evolved from a traditional brokerage into a beacon for the state's real estate ventures.

Under the strategic leadership and innovative foresight of our founders, Gold Peach Realty has been instrumental in shaping Georgia's real estate scene, fostering a reputation for excellence across various sectors, including multi-family, retail, office, land, residential, and industrial properties. Our founders' unwavering commitment to cultivating successful relationships has propelled Gold Peach Realty into the forefront of the industry.

Today, Gold Peach Realty stands as a testament to Georgia's growth, with an impressive track record of success, and a testament to our role in Georgia's rapidly expanding real estate market.

# ABOUT OUR SERVICES

Gold Peach Realty offers an extensive array of commercial real estate services tailored to the vibrant and diverse Georgian market. Our expertise spans across various sectors, ensuring that whatever your commercial real estate needs, we have the specialized knowledge and experience to guide you to success.



## LAND

Whether for development, investment, or conservation, our land services encompass comprehensive market analysis, due diligence, and strategic positioning.



## MULTI-FAMILY

Our team has a deep understanding of the multi-family sector, from small complexes to large-scale developments, providing investment, management, and sales strategies that maximize your returns.



## RETAIL

We navigate the dynamic retail landscape with a keen eye on market trends, helping clients find the perfect spaces for their businesses and securing the best possible terms.



## OFFICE

Gold Peach Realty excels in office real estate, offering prime locations and innovative workspaces tailored to the needs of modern businesses, from startups to established corporations.





## **BUSINESS**

Our brokerage services assist clients in buying, selling, or leasing business properties, ensuring transactions are smooth and advantageous.



## **INDUSTRIAL**

We understand the unique demands of industrial real estate and offer solutions for acquisition, sale, and leasing of warehouses, distribution centers, and manufacturing facilities.



## **TENANT REPRESENTATION**

We advocate for tenants, delivering personalized service to secure spaces that align with their specific business objectives and operational requirements.



## **EXPERIENCE EXCELLENCE**

At Gold Peach Realty, we pride ourselves on the depth and breadth of our market knowledge. Our professionals maintain an extensive database of clients and properties, familiar with the marketplace's nuances and having marketed a diverse array of property types through various sales methods. This ensures that your commercial real estate goals will not only be met but exceeded, with strategic planning and execution at every step.

# WHY CHOOSE



**GOLD PEACH**  
REALTY

## **UNPARALLELED SERVICE IN GEORGIA**

Our full-service brokerage boasts a dedicated team including client concierge staff, diligent transaction coordinators, expert agents, a creative in-house marketing team, and a results-driven sales force. Recognized as an award-winning brokerage, we are renowned for our exceptional service and consistent delivery of outstanding results. Partner with us for a comprehensive, seamless experience that sets new standards in commercial real estate transactions.

## **OUR STAFF IS THE BEST IN THE BUSINESS**

Our team at Gold Peach Realty consists of top-tier professionals with comprehensive expertise in commercial real estate. Our Georgia roots, combined with forward-thinking business strategies, ensure our success, which is further enhanced by our innovative marketing, technology, and profound market knowledge.

## **“OFF MARKET” INVESTORS GO-TO**

At Gold Peach Realty, we have access to premium data sources and an entire sales and marketing team for targetting Georgia's "off-market" commercial real estate buyers and sellers. Our expertise lies in our expansive data network of private and corporate clients. Our strategic "off-market" approach involves careful outreach, advanced data analysis, and cultivating strong relationships that lead to substantial outcomes, securing a competitive advantage for our clients in Georgia's dynamic real estate market.

## **EXPERTISE IN GEORGIA'S MOST DESIRABLE LOCATIONS**

Gold Peach Realty has a strategic presence in the most sought-after regions of Georgia, ensuring access to the state's prime neighborhoods. Our deep local knowledge and presence in the market grant our clients an unmatched competitive advantage in Georgia's flourishing real estate landscape.

## **SPECIALIZED IN MID-MARKET DEALS**

Gold Peach Realty consistently closes a noteworthy volume of commercial transactions, specializing in mid-market investments ranging from \$1M to \$20M.



# MEET YOUR TEAM



## ELITE AGENTS

Hand Selected Top Local Agents For Service & Results

- Provides - Local Market Expertise
- Provides - World Class Service
- Provides - Negotiation Power
- Provides - Confidence For Results



## CLIENT CONCIERGE

Dedicated Client Concierge Staff Available 7 Days/Week

- Requests - For Information
- Requests - For Services
- Requests - For Showings
- Requests - For Appointments



## TRANSACTION COORDINATION

Dedicated Coordinators For Stress-Free Closings

- Manages - Listing On-Boarding
- Manages - Listing Preparations
- Manages - Transaction & Closing Process
- Manages - Important Dates & Documents
- Manages - Vendors & Timelines



## IN-HOUSE MARKETING & SALES

Marketing & Sales Experts For Industry Leading Results

- Creates - Professional Content & Creatives
- Creates - Powerful Multi-Channel Ad Campaigns
- Creates - Maximum Exposure For Listings
- Calls - Every Interested Lead To Schedule Showings
- Calls - Local Market To Find Interested Buyers



# LISTING SERVICES

Gold Peach Realty leverages a suite of powerful tools and platforms to ensure our listings are seen by the widest audience of qualified buyers and tenants.



CoStar™



LoopNet™



LoopNet

## Find your next commercial property

For Lease

For Sale

Auctions

Businesses For Sale

Enter a property type

Enter a location

Search

Advanced Search >

## LOOPNET

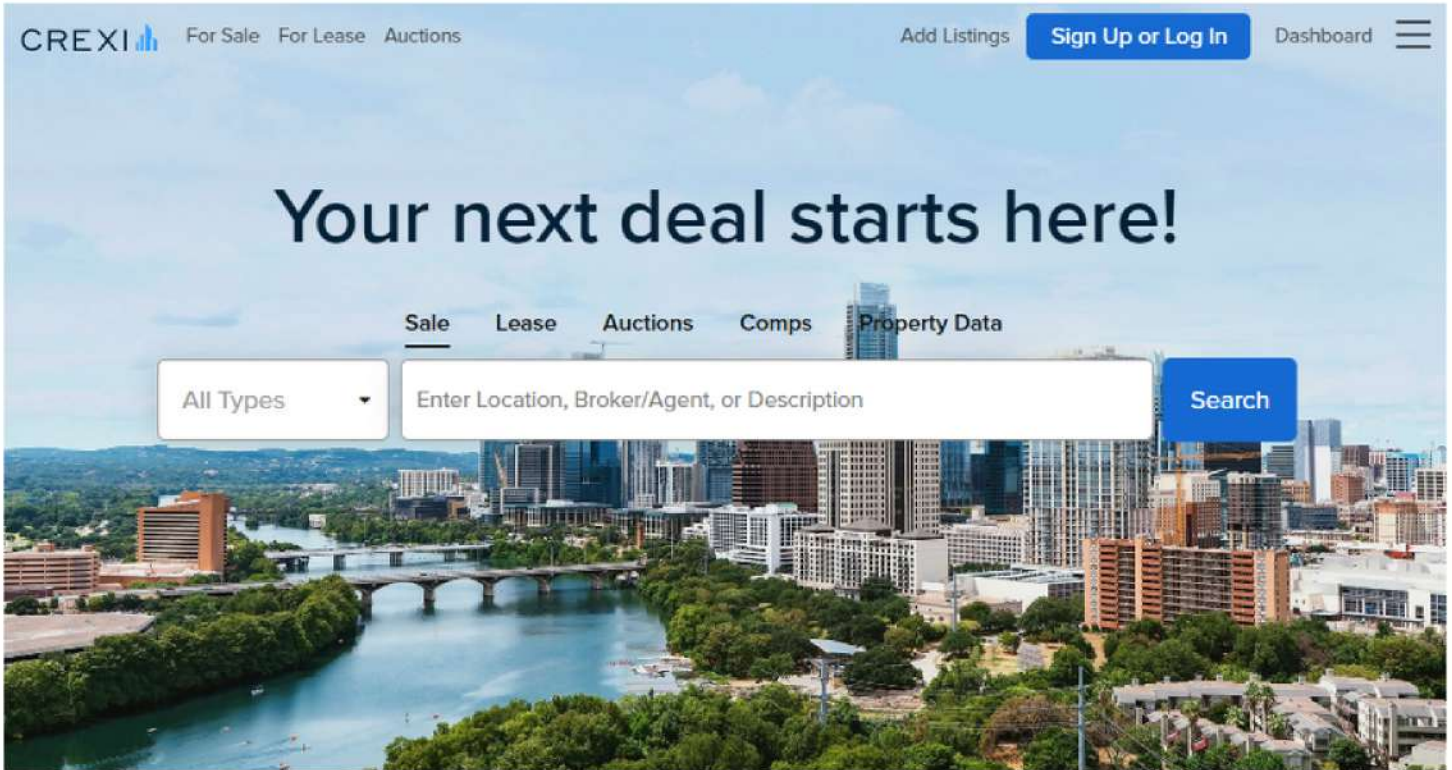
Gold Peach Realty leverages paid listing ads on LoopNet.com, a leading online commercial real estate marketplace, to ensure our listings achieve maximum exposure. As a distinguished member, our properties benefit from LoopNet's high-visibility listings and precision targeting tools, which place our inventory in the spotlight for a vast network of active buyers and lessees. This strategic placement on LoopNet signifies our commitment to offering our clients the most effective and efficient path to market, spotlighting their properties for premier exposure and expedited transactions.

## COSTAR GROUP

Gold Peach Realty capitalizes on the extensive capabilities of CoStar to provide unmatched market intelligence and exposure for our listings. Recognized as a premier partner, we utilize CoStar's comprehensive analytics and targeted advertising opportunities to position our properties prominently within the market. This ensures that our listings are not only visible but also strategically showcased to CoStar's extensive network of reputable commercial real estate professionals, thereby accelerating the sales process and ensuring optimal outcomes for our clients.



# CREXI



## CREXI

As a premier member of Crexi, Gold Peach Realty harnesses the full potential of this powerful platform to elevate our commercial real estate listings. With top placement features and targeted marketing campaigns, Crexi amplifies our properties' visibility among a curated audience of qualified investors and tenants. This partnership ensures our listings are not only featured but seen by the right people, significantly enhancing the likelihood of a successful and expedient sale.



## MLS

Gold Peach Realty taps into the extensive network of the Multiple Listing Service, putting our listings in front of a significant audience of active users and syndicating to top real estate platforms for such as Zillow, Realtor.com and hundreds more for maximum visibility

# MAXIMUM EXPOSURE

WITH OUR MULTI-CHANNEL  
IN-HOUSE MARKETING



As Seen On:



MANSION GLOBAL

Robb Report  
MAGAZINE FOR THE LUXURY LIFESTYLE

THE WALL STREET JOURNAL

UPMKT  
UNIVERSITY OF PROFESSIONAL MARKETING

The New York Times

duPont  
REGISTRY  
A BUYERS GALLERY OF FINE HOMES



GLOBAL NETWORK  
Over 100 International  
Real Estate Sites



# MAJOR MEDIA CAMPAIGNS

## NEWS SITES & APPS:

FOX, CNN, NBC, LOCAL, GOOGLE NEWS

## SPORTS SITES & APPS:

ESPN, FOX SPORTS, GOLF, CBS

## WEATHER SITES & APPS:

WEATHER CHANNEL, ACCUWEATHER

## PRESS SITES & APPS:

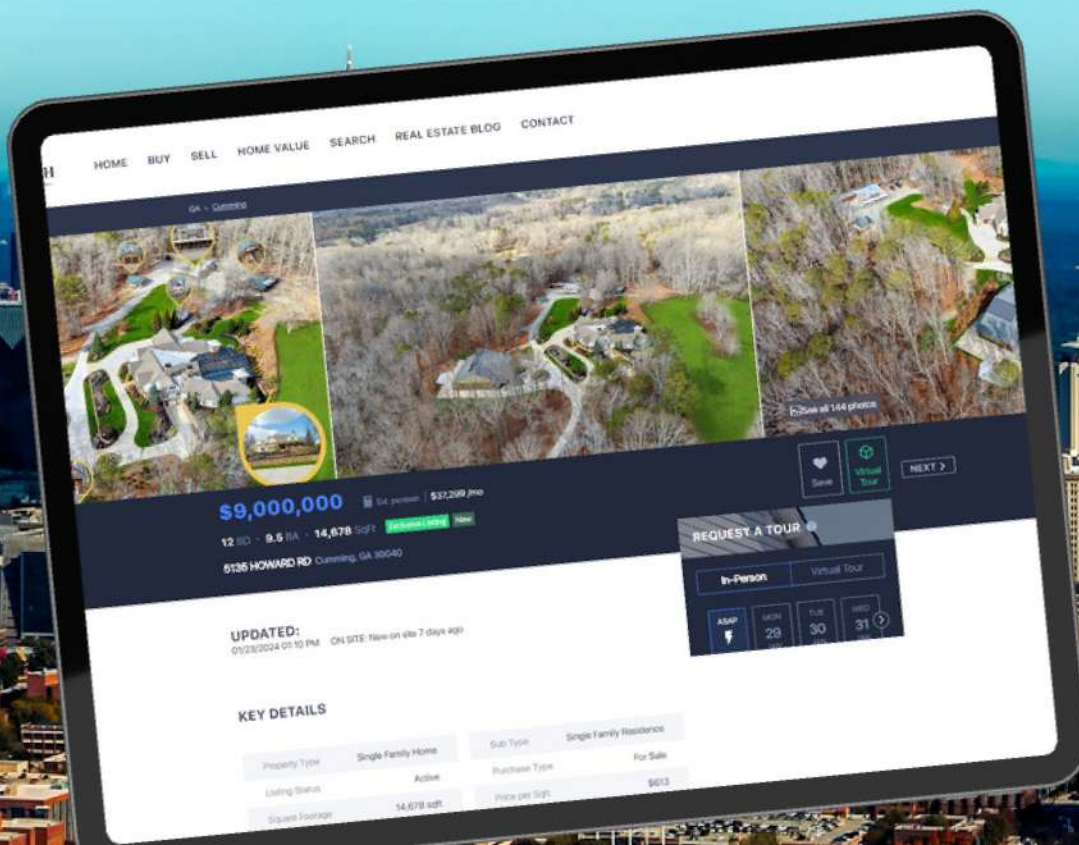
THE WALLSTREET JOURNAL, NY TIMES

## LUXURY SITES & APPS:

TRAVEL, AUTOMOTIVE, SHOPPING

## REAL ESTATE SITES & APPS:

INVESTOR, COMMERCIAL, PROPERTY SEARCH & MORE





# PERFECT PRESENTATION

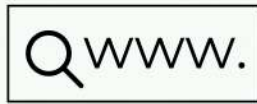
## WEBSITE **GOLDPEACHREALTY.COM**

Our website serves as a digital gateway to the heart of Georgia's commercial real estate, incorporating cutting-edge technology for an enhanced user experience. Redesigned with precision, our site excels in search engine optimization, ensuring visibility and lead generation for our listings.

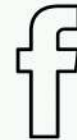
Optimized for both desktop and mobile use, our website provides a comprehensive look into our property listings, detailed market insights, and a suite of tailored services. It's designed to facilitate the decision-making process for investors, developers, and business owners alike, delivering content that is both informative and easy to navigate. We invite you to explore the potential of the Georgian real estate market through our virtual presence, which reflects our commitment to excellence and innovation in the industry.



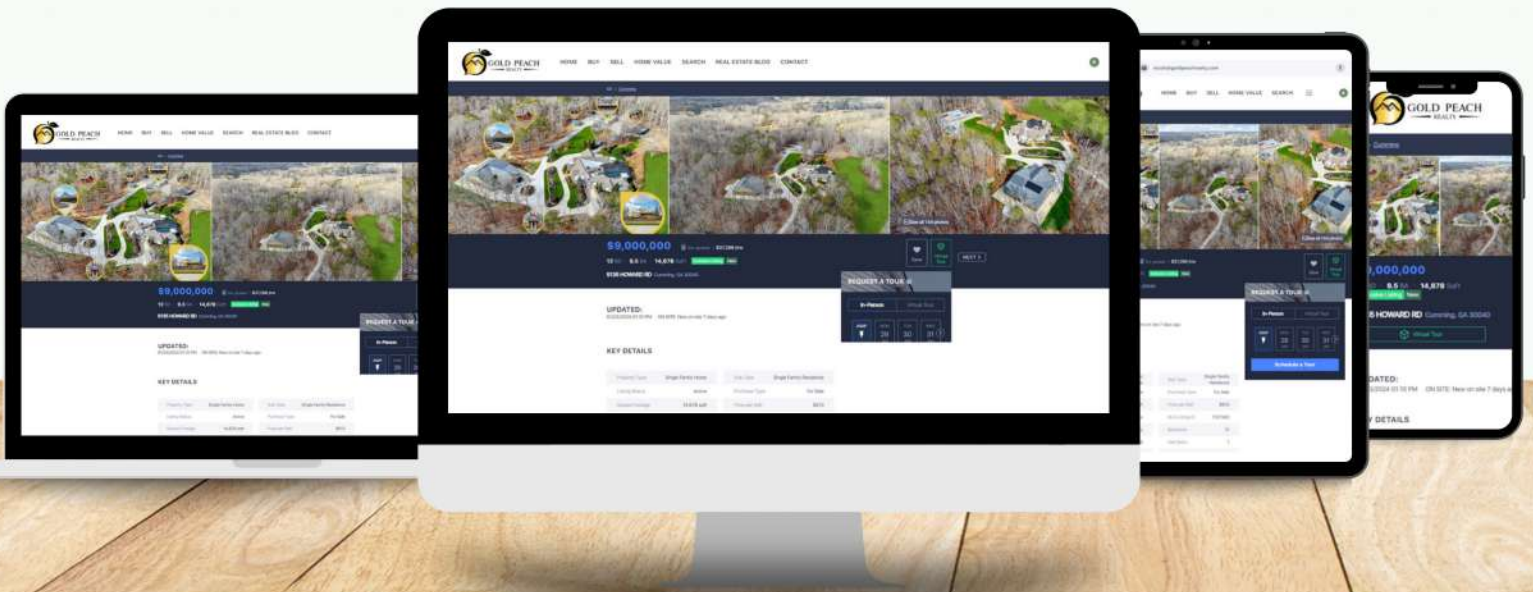
Highly Targeted  
Website Traffic &  
Lead Database



Optimized for PC,  
Mobile & Ipad



Lead Capture,  
& Social Sharing  
Landing Pages



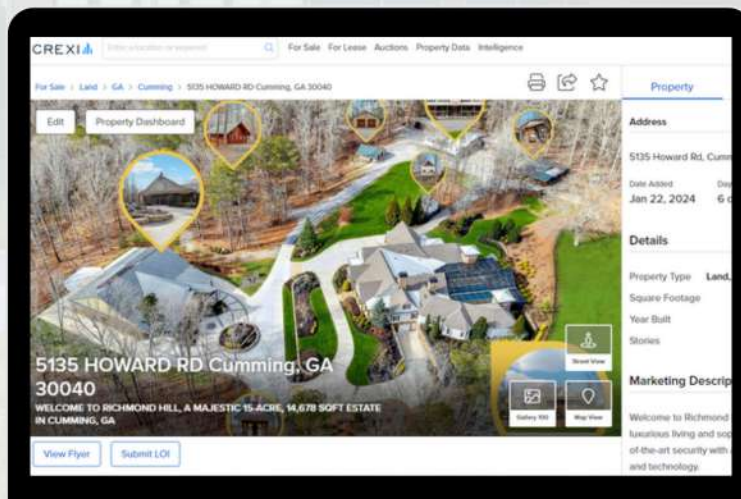


# COMMERCIAL PRESENTATION

## MARKETING PACKAGE

Gold Peach Realty takes pride in offering custom, professionally designed marketing packages that showcase the unique selling points and features of each property we represent. Our in-house team expertly crafts materials that highlight the property's best aspects for both print and digital mediums. This ensures that whether viewed online or in hand, the marketing collateral captures attention and communicates value effectively, setting the stage for a successful transaction.

- **EVALUATION**
- **MARKET ANALYSIS**
- **FINANCIAL ANALYSIS**
- **PROFESSIONAL PHOTOGRAPHY**
- **DRONE PHOTOGRAPHY**
- **LISTING MEDIA DESIGN**
- **LISTING MARKETING CAMPAIGNS**
- **PRINT MARKETING MATERIALS**
- **DIGITAL MARKETING MATERIALS**



## MARKETING SIGNAGE

Our marketing signage is a cut above the rest, providing eye-catching, professionally designed displays that distinguish our listings.

Gold Peach Realty's in-house design professionals ensure each sign is not only easy to read but also visually appealing, supporting quick installation and displaying industry-leading uniqueness.

We collaborate closely with property owners to ensure the final design meets their approval and enhances the property's visibility in the market.





# **IN-HOUSE MARKETING**

Our in-house marketing team at Gold Peach Realty specializes in creating high-impact, hyper-targeted advertising campaigns across Google Search and social media, complemented by strategic email marketing to our carefully curated database. We craft bespoke marketing materials with a dual focus on compelling online presence and eye-catching print presentations, ensuring our properties resonate with the right audience and drive tangible results.

## **MARKETING SOCIAL MEDIA**

Gold Peach Realty employs a dynamic social media marketing strategy that amplifies the visibility of our properties across platforms like Facebook, Twitter, Instagram, and LinkedIn. We focus on maximizing exposure through timely and targeted digital marketing initiatives, tailored to highlight the unique attributes of each listing. Our agile approach to social media allows us to track, evaluate, and refine our marketing tactics in real-time, ensuring that our properties receive the focused attention they deserve in a crowded digital landscape.

## **MARKETING EMAIL**

Gold Peach Realty's email marketing system is meticulously crafted to maximize exposure for our properties and engage with the most relevant market movers. Our creative and functional email campaigns are sent to a proprietary database of over 30,000+ clients and brokers, ensuring your property reaches a wide yet targeted audience. We constantly refresh our database and strategies to keep pace with market dynamics and client needs, ensuring that our properties stand out in the bustling Georgian real estate marketplace.

## **MARKETING PUBLIC RELATIONS**

Gold Peach Realty's Commercial Division is a prominent name in the Georgian real estate landscape, garnering attention in major publications and media outlets. Our strategic public relations campaigns ensure that noteworthy transactions and our agents' achievements are highlighted, cementing our reputation as trusted advisors in the commercial real estate sector of Georgia.

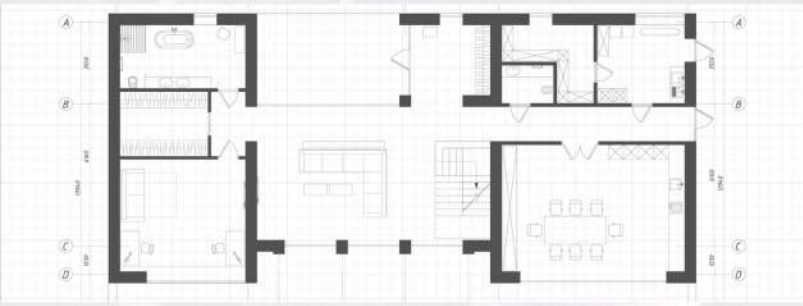
## **MARKETING BROKER COOPERATION**

At Gold Peach Realty, we embrace cooperation with industry brokers, understanding that partnership is key to expansive reach and successful transactions. Our philosophy is rooted in creating win-win scenarios, ensuring that our clients benefit from a larger footprint and amplified exposure. We acknowledge that a majority of deals are sealed through collaborative efforts, and we are dedicated to fostering relationships that facilitate mutual success and client satisfaction.



# MARKETING PHOTOGRAPHY + FLOOR PLANS

At Gold Peach Realty, we recognize the critical role of high-quality imagery and detailed floor plans in marketing commercial properties. Our approach includes professional photography that showcases each property's ambiance and potential, alongside precise floor plans that offer clear, informative layouts to prospective buyers. This combination of visual storytelling and detailed information is crucial in driving the interest of discerning clients and in the ultimate success of your listing.



A listing's photos are often the first and sometimes only opportunity to attract a potential buyer. We use only the best-trained & tested professional photographers and drone pilots to ensure that your listing is shown in its best possible light.



# AERIAL



# PHOTOGRAPHY



Aerial photography in real estate can show buyers a much more accurate depiction of what the property is actually like.

## BENEFITS of having aerial photos

### PROVIDES VIEWS OF



The entire property and surrounding land



The condition of the roof and other property features



The views, privacy & relative location to neighboring properties



The neighborhood and surrounding area, including the proximity to nearby facilities and amenities



# TOOLS & RESOURCES

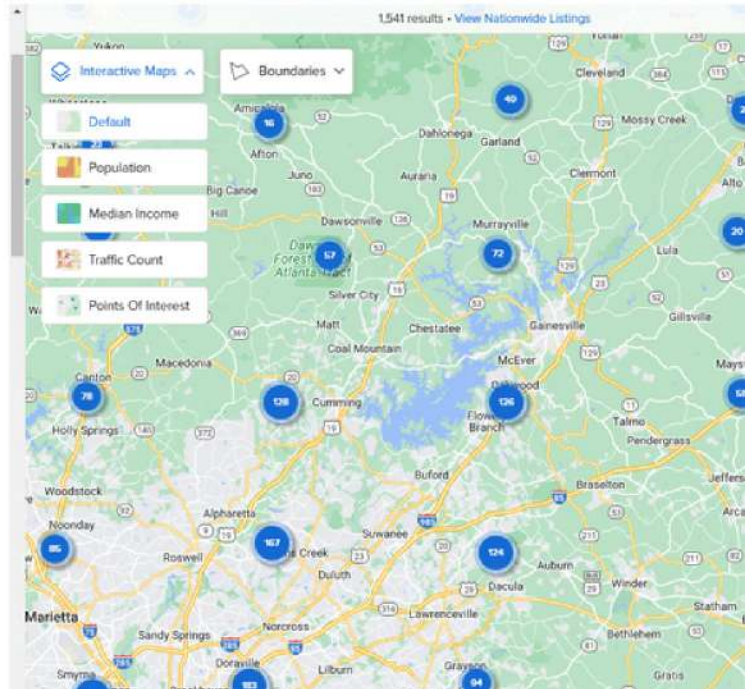
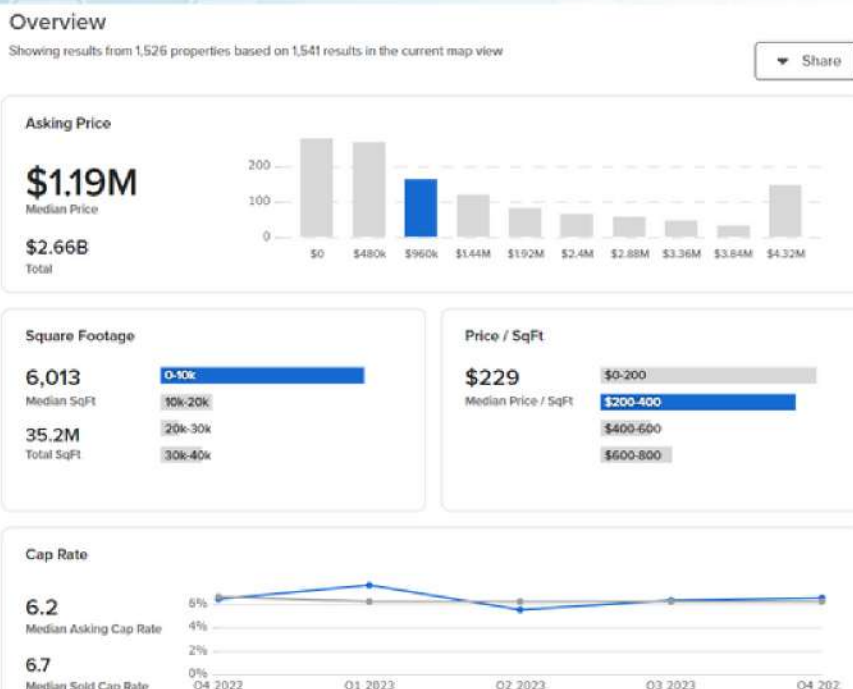
At Gold Peach Realty, we ensure our team has access to a comprehensive suite of industry-leading tools and resources via premium platforms like Crexi, LoopNet, and other elite data services.

## Enhanced Data

Our arsenal includes advanced capabilities from Crexi and LoopNet and many more, offering extensive mapping, demographic analysis, and in-depth market analytics. These platforms provide us with the critical data and insights required for superior location intelligence and strategic decision-making.

Through our subscriptions to top-tier services, we have access to precise lease analysis, current tenant information, and retail expansion trends. These tools empower Gold Peach Realty with the latest information on commercial real estate dynamics, from detailed lease calculations to retail tenant movements.

Gold Peach Realty's approach is to harness the power of these sophisticated systems to deliver a data-driven, informed service. This commitment to technology ensures our clients receive comprehensive support backed by the most accurate and up-to-date market intelligence available in the industry.







# WHAT TO EXPECT

WORLD CLASS SERVICE & SUPPORT  
PROFESSIONALISM & RESPECT  
HONESTY & INTEGRITY  
TRANSPARENCY  
TIMELY & REACHABLE  
EXPERTISE & GUIDANCE  
SUCCESSFUL REAL ESTATE EXPERIENCES



**GOLD PEACH**  
REALTY



## COMMERCIAL

---

**LAND**

**MULTI-FAMILY**

**RETAIL**

**OFFICE**

**INDUSTRIAL**

**BUSINESS**